

Spatial Plan Data Newsletter

A Welsh Assembly Government project has been set up to collate and disseminate data for the areas identified in the Wales Spatial Plan. It is titled the Spatial Plan Data Project. This is the first of a series of occasional newsletters to inform users interested in these data of the progress made to date.

What is the Wales Spatial Plan?

Spatial planning is the consideration of what can and should happen where. It investigates the interaction of different policies and practice across regional space, and sets the role of places in a wider context. It goes well beyond 'traditional' land-use planning and sets out a strategic framework to guide future development and policy interventions, whether or not these relate to formal land use planning control.

The role of the Wales Spatial Plan is:

- to ensure the Welsh Assembly Government and its partners and agents develop policy in ways which take account of the different challenges and opportunities in the different parts of Wales; and
- to provide a basis and momentum for working together on a shared agenda locally, so that the different parts of Wales can establish their own distinctive approaches to meet the objectives set out by the Welsh Assembly Government.

For further information, please see the Wales Spatial Plan document at:

<http://new.wales.gov.uk/about/strategy/spatial/sppublications/wallesspatial?lang=en>

Progress with the data project

The first major task for the data project has been to develop a set of boundaries defining the Wales Spatial Plan areas for data analysis purposes.



These boundaries have been defined to be used for the collation of data only, and the definitions of them do not change the core concept of the Wales Spatial Plan, which uses 'fuzzy' boundaries from a policy perspective.

The following paper sets out the definitions of the boundaries in detail, and also includes a section explaining how the definitions of the boundaries were arrived at:

<http://new.wales.gov.uk/docrepos/40382/40382313/statistics/spatial-plan/spatial-plan-boundaries.pdf?lang=en>

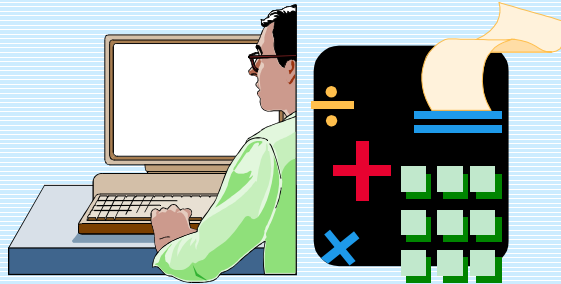
Some work investigating suitable data sources has also taken place, and requests for these data have been made. As the data are received over the next month or so, they will be collated into the Spatial Plan areas, for inclusion in detailed data summaries.

Which datasets are we hoping to include?

The Spatial Plan areas defined above overlap and in many cases do not follow local authority boundaries. Instead they are built up from lower super output areas (LSOAs) which are small area building blocks defined the Office for National Statistics, from which most UK geographies can be derived. The Spatial Plan Data Project is therefore limited to datasets that have LSOA identifiers within them.

There are, however, many datasets for which LSOA identifiers can be incorporated, and even if the data are not publishable at the individual small area level, the data can be reliably aggregated to the Spatial Plan areas as defined. In some cases, this requires significant work to incorporate identifiers and manipulate the data, but with the help of geographical information systems this is all possible. It is therefore planned to pull data together covering the following broad areas and decisions on what data can be reliably published will be taken as the data are fully analysed.

- Education
- Health and well-being
- Population
- Other demographics
- Economy and labour market
- Transport
- Housing
- Natural and built environment
- Deprivation



Further information

As the project develops, further information will be added to the following page on the Welsh Assembly Government internet page:

<http://new.wales.gov.uk/topics/statistics/theme/spatial-plan/?lang=en>

This and future newsletters will also be published to this page, along with other useful information as the project develops.

If you wish to speak to anyone regarding the Spatial Plan Data Project, including suggestions for data items that you would like us to investigate developing, please contact the project manager at the following address:

Adam Al-Nuaimi
Statistical Directorate
Room 2-002, CP2
Crown Buildings
Cathays Park
Cardiff
CF10 3NQ
Tel: 029 2080 1238
E-mail: adam.al-nuaimi@wales.gsi.gov.uk